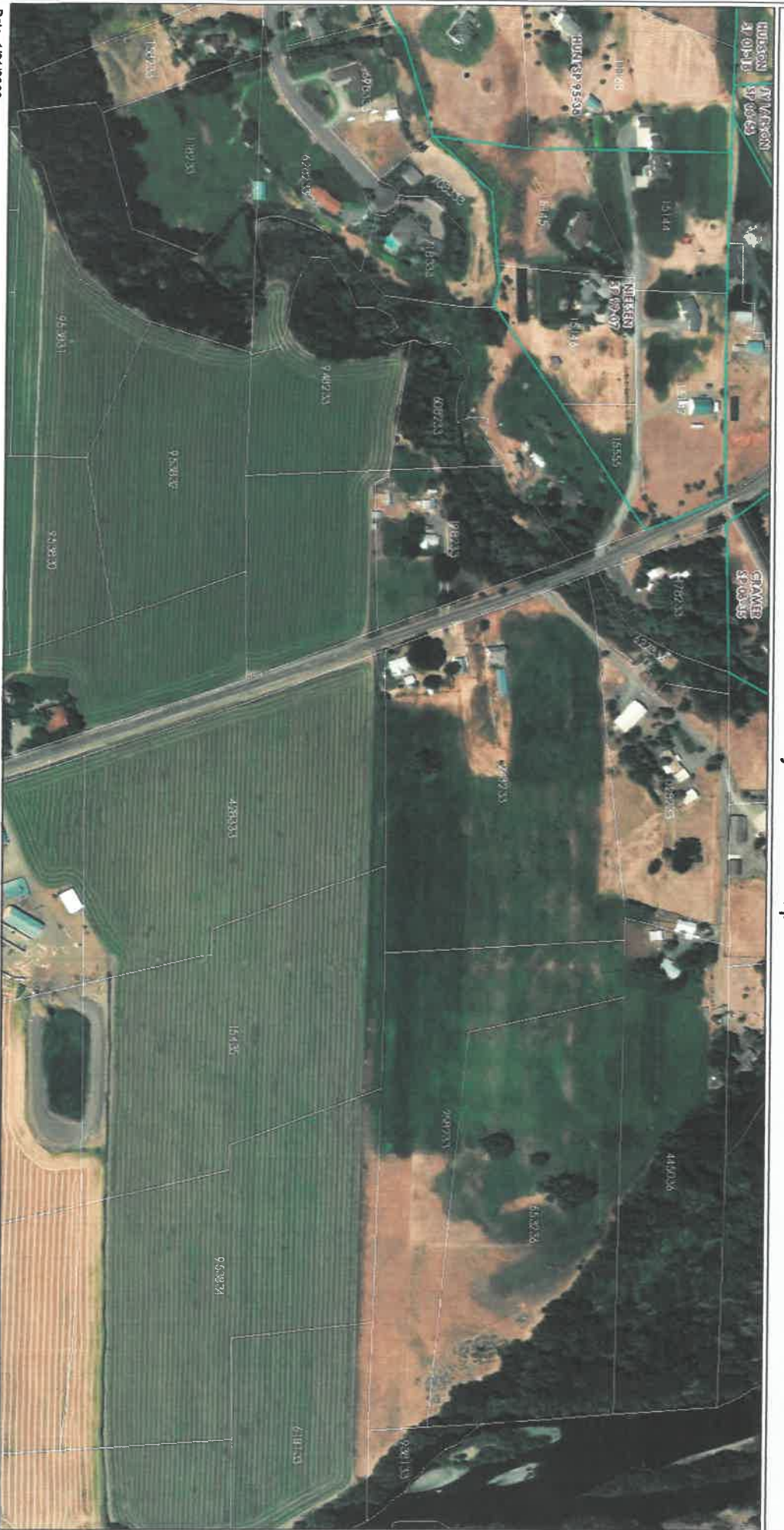


Kittitas County COMPAS Map

Existing



Date: 1/31/2020

Disclaimer:
Kittitas County makes every effort to produce and publish the most current and accurate information possible. No warranties, expressed or implied, are provided for its date, its use, or its interpretation. Kittitas County does not guarantee the accuracy of the material contained herein and is not responsible for any use, misuse or representations by others regarding this information or its derivatives.



1 inch = 376 feet
Relative Scale 1:4,514

RECEIVED
FEB 04 2020
Kittitas Co. CDS

Kittitas County COMPAS Map

Existing



RECEIVED
 FEB 04 2020
 Kittitas Co. CDS

Disclaimer:
 Kittitas County makes every effort to produce and publish the most current and accurate information possible. No warranties, expressed or implied, are provided for the data, its use, or its interpretation. Kittitas County does not guarantee the accuracy of the material contained herein and is not responsible for any use, misuse or representations by others regarding this information or its derivatives.

Date: 1/31/2020



1 inch = 378 feet
 Relative Scale: 1:4,514

TPN 248233 is only parcel with improvements at 1320 Brown road. See site plan.